

Decision making in complex
situations: we are going to do the
following....

Moderated Panel of Experts

Thursday Feb 22, 2018

2:15-3:15 PM

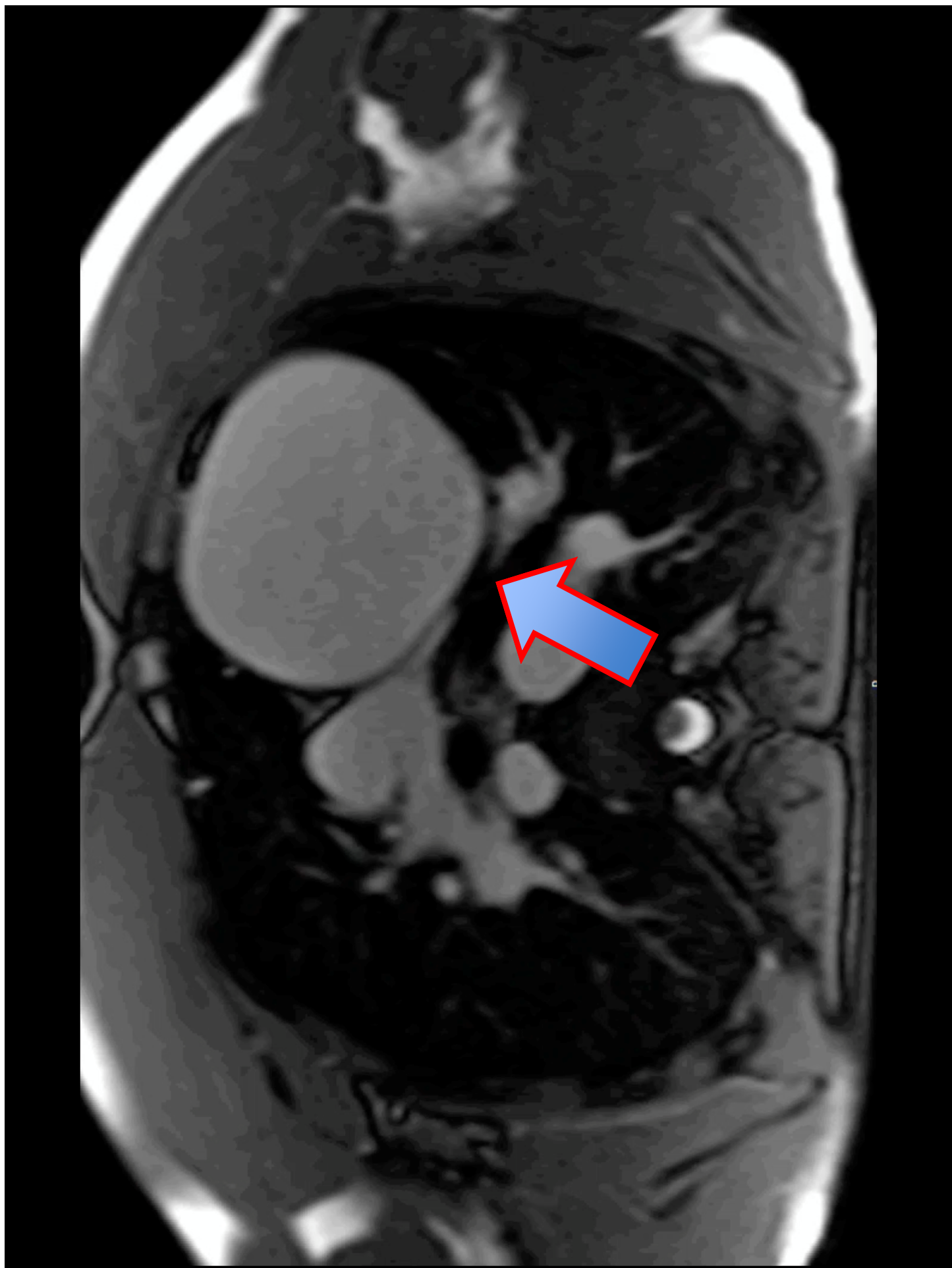
Case 1

- 4 week old Infant with AV Canal (no VSD), moderately unbalanced to the RV + moderate coarctation of the aorta
- There is no PDA
- On echo, large amount of shunting left –to- right at ASD
- Significant heart failure
- Cardiac Cath: >3:1 Qp:Qs; near systemic PA pressure, transverse and isthmus arch narrowing

Case 2

- 16 yr old HLHS with aortic hypoplasia/mitral hypoplasia, free native aortic insufficiency, dilated reconstructed ascending aorta with max diameter of 8.5 cm





Case 3

- Corrected transposition of the great arteries
TGA {S,L,L,}

Case 4

- Neonate with dysplastic tricuspid valve, severe TR, valvar pulmonary atresia, well formed dilated RV, but RV press estimate is low.

Case 5

- Neonate with HLHS and severe Tricuspid regurgitation