

Building the Integrated Clinical Service Line: Strategy & Implementation *The Chicago Perspective*

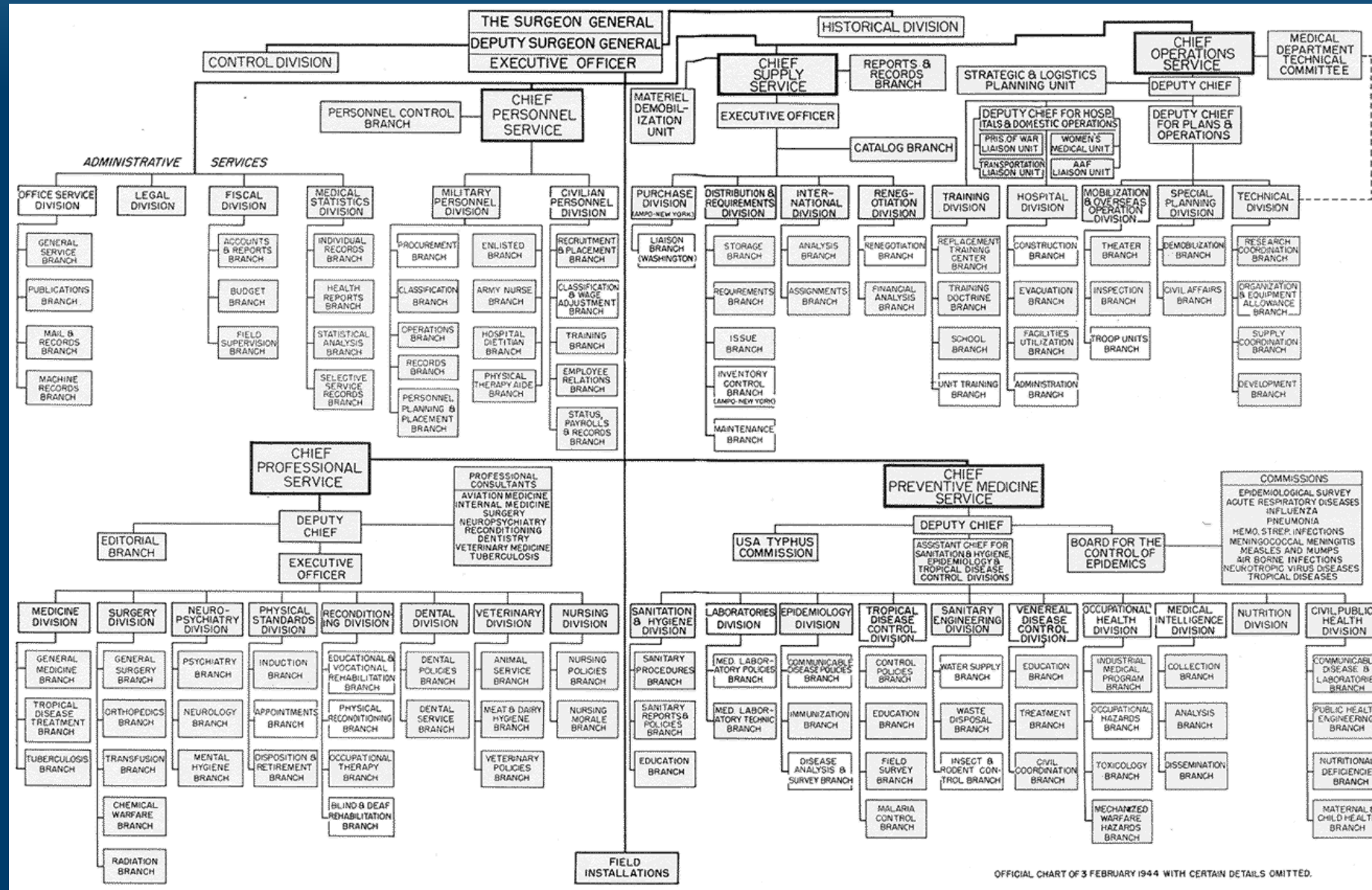
Ben Black

Administrator, Heart Center
Lurie Children's Hospital of Chicago



'Cardiovascular service lines are the ultimate team sport.'

-Kevin Kelly, Chair Peds UNC

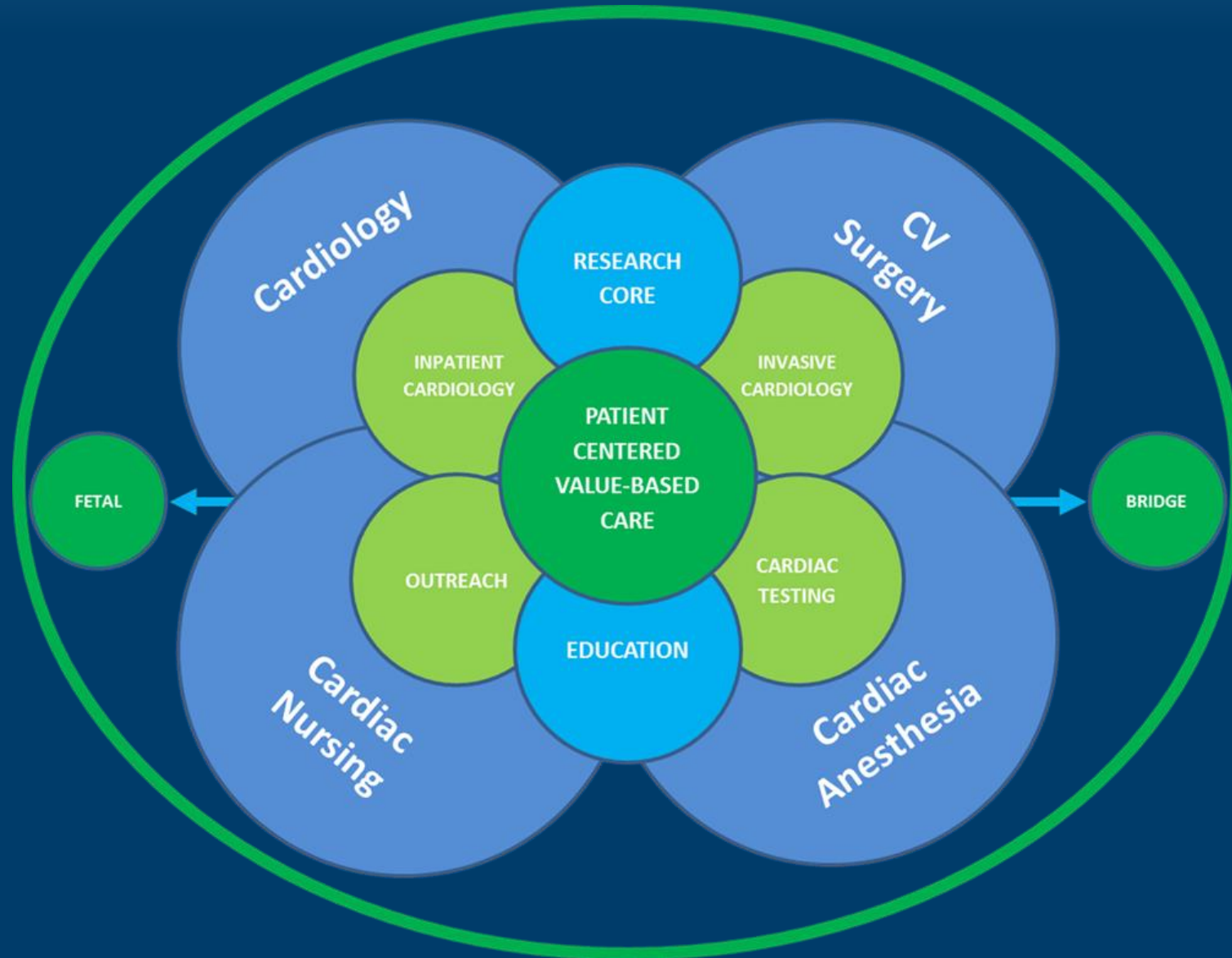


The Heart Center



<https://www.google.com/url?sa=i&rct=j&q=&esrc=s&source=images&cd=&cad=rja&uact=8&ved=0ahUKewjdi5rmxKjYAhVJ0FQKHWHEdvwQjB0IBg&url=http%3A%2F%2Fsfscfcograin.com%2Flanguage%2Fen%2F&psig=AOvVaw1IE-AWG3w8GsmnyvH6aLaX&ust=1514407240197822>

The Heart Center



Game Theory?

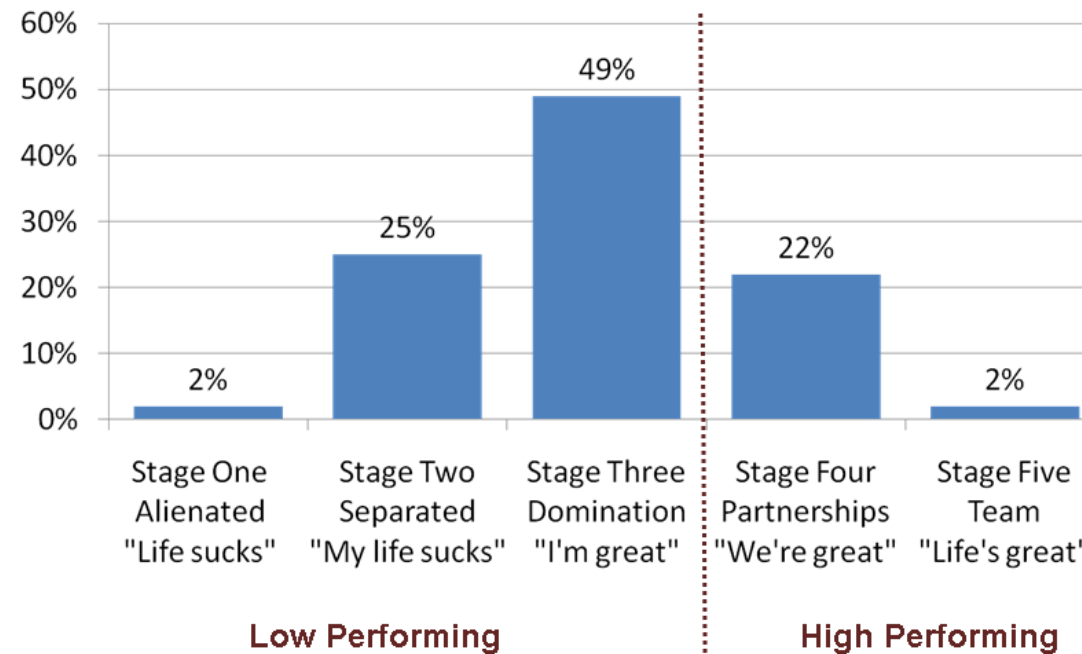


Best is an endpoint.
Better is a quest.

the research is clear: *we are happiest when we are improving.*

5 Stages of Culture

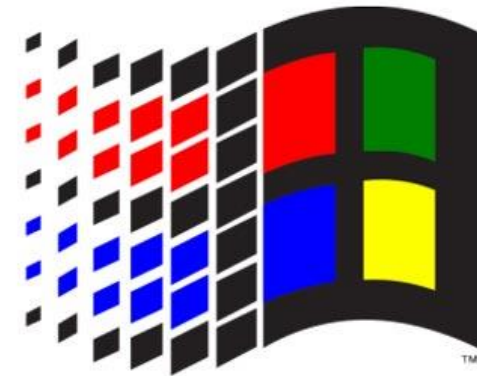
% of Tribes at each Stage



Tribal Leadership: Leveraging Natural Groups to Build a Thriving Organization
by Dave Logan, John King, Halee Fischer-Wright



Think different.



MICROSOFT®
WINDOWS™

A Culture of Leadership





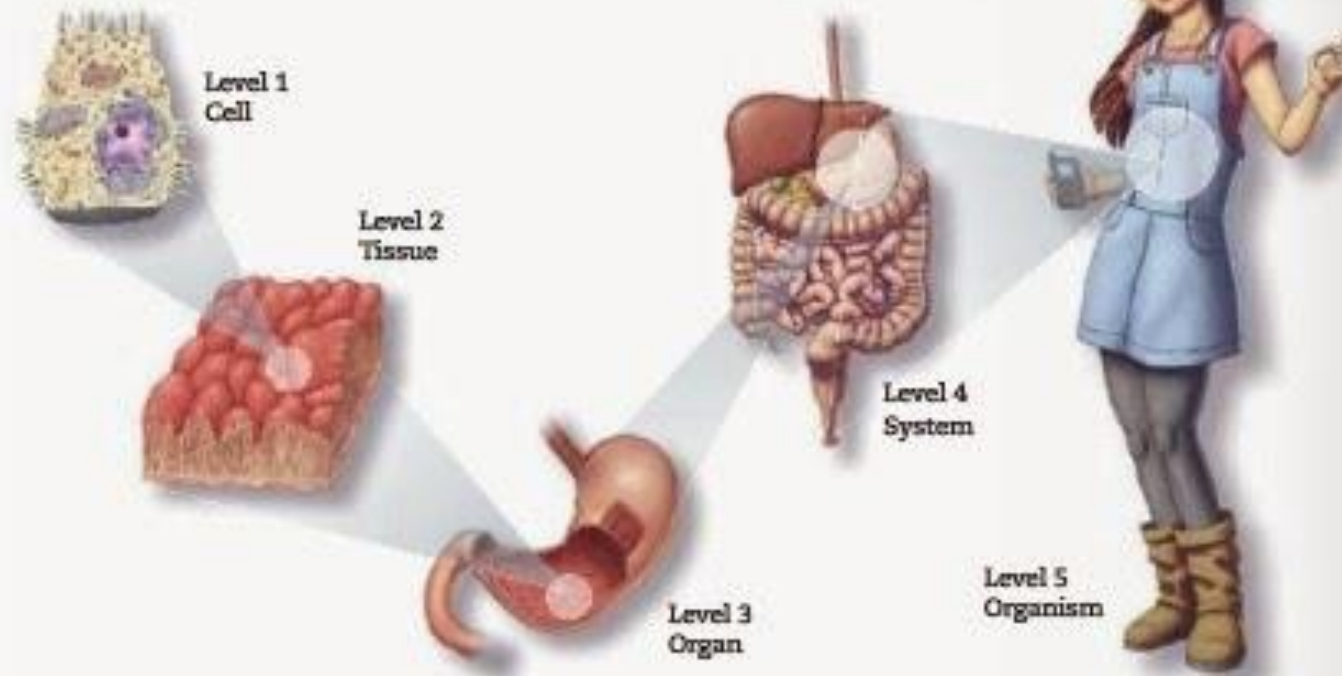
**“ Hire good people,
who hire good people,
and let them do
their job. ”**

Tom Ricketts,
Executive Chairman of the Chicago Cubs



Bill Streicher-USA TODAY Sports






Levels of organization

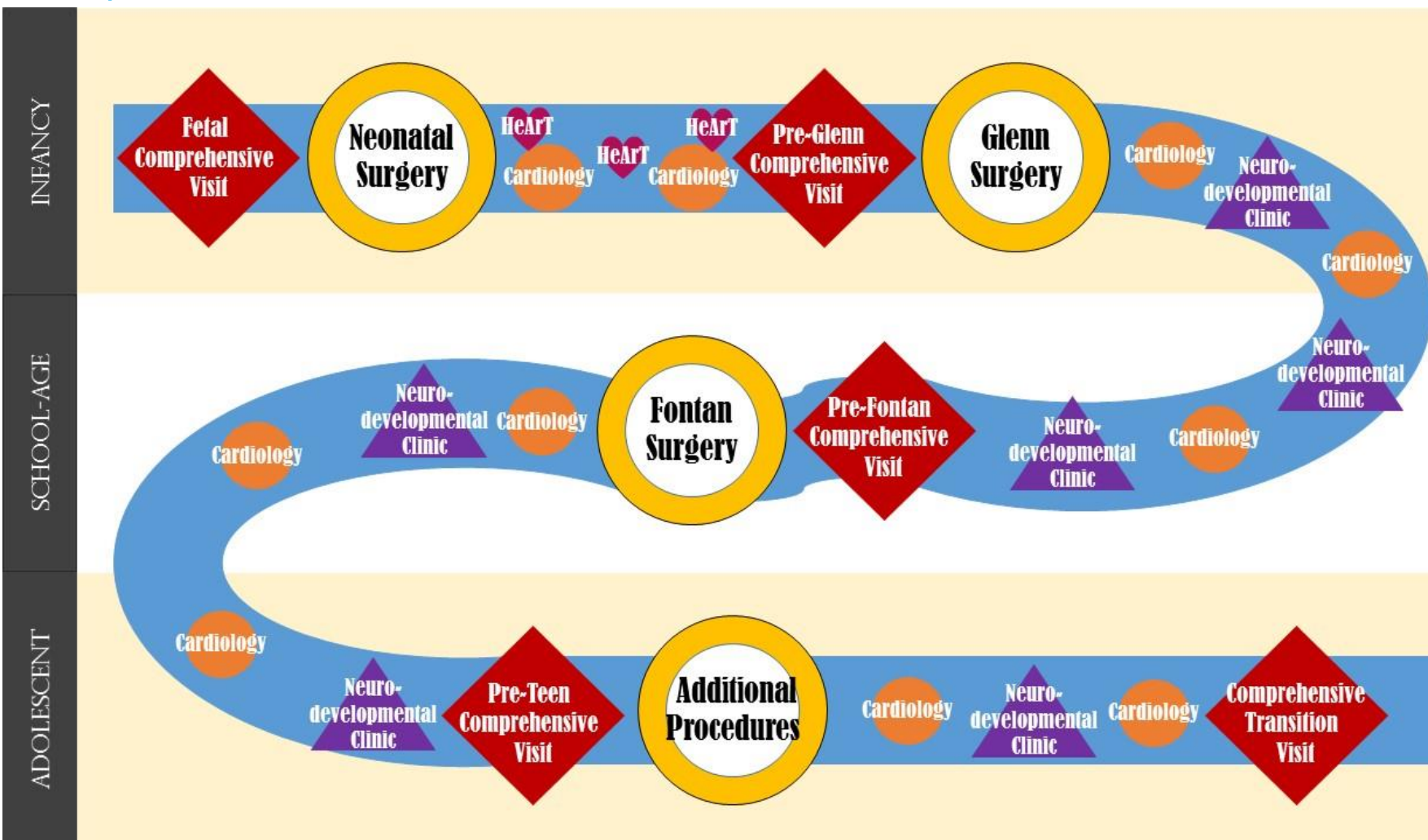


SINGLE VENTRICLE CLINIC

COMPREHENSIVE FONTAN ROADMAP

SYMBOLS

-  = Inpatient admission and surgery
-  = Comprehensive evaluation in the Single Ventricle Center of Excellence
-  = Routine outpatient cardiology f/u
-  = Interstage monitoring in HeArT Clinic
-  = Neurodevelopmental clinic visits



THANK YOU!

Ben Black

benblack@luriechildrens.org

312-227-4387

